

Information that follows amends that provided in the documents referenced.

- Watch Alternate Time (not Main Default Time) displays Am (or Pm) when a differential (remote) time is set and On.
- Watch Daily Alarm and Countdown Timer sound for 10 seconds, instead of 3 beeps as described.
- ALT (Alternate) Displays return to the MAIN Display after 5 seconds, instead of 3 seconds as described.

Manual page 40 & Review Card - Dive Computer Operating Mode Selection:

The manual states that Dive Computer Operating Modes are 'accessed/selected' by 2 second presses of the M (Mode) button and that the Operating Mode is 'changed' any time it is 'accessed'. The procedure to actually 'change' operation from one Mode to another has been expanded as follows.

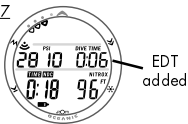
While viewing the Surface Main screen of an Operating Mode currently 'selected' (NORM, GAUG, or FREE) -
 >> press/hold the M button, release when the Operating Mode you wish to select appears.

While the Mode's graphic (GAUG, FREE, or NORM) is flashing (flashing indicates that that Mode can be selected by a less than 2 second press/release of the M button) -

- >> press/release the M button to select that Mode. That Mode's graphic will stop flashing and that will become the 'selected' Operating Mode.
- If M is not pressed during a period of 10 seconds while a Mode graphic is flashing, operation will revert to the Mode previously selected, identified by the graphic (NORM, GAUG, or FREE) scrolling with the Altitude and Wet graphics.

Elapsed Dive Time (EDT) has been added to the NORM No Deco Main Dive Display (Fig. 87) and GAUG Main Dive Display (Fig. 123) which appear as follows:

Fig. 87



EDT also appears on Operating Manual Fig. 25, 28, 77, 78, 79, 81, 83, 84, 101, 102, 106, 110, and the No Deco Main on the back of the Review Card.

(over)

Fig. 123



FREE Dive Operating Mode:

Although breathing apparatus is not utilized for FREE Dive activities, nitrogen tissue loading remains a factor. Nitrogen loading is calculated based upon a fixed FO₂ of AIR. Since a user has the option of alternating between NORM (SCUBA) and FREE Dive activities within a 24 hour period, nitrogen calculations and the displayed value of No Deco Dive Time Remaining (NDC Time) are carried over from one operating mode to the other, which permits the user to maintain awareness of nitrogen absorption and offgasing status.

The mathematical model currently used in the ATOM 2.0 is based on no decompression/decompression multilevel repetitive dive schedules. This algorithm does not take into account the physiological changes associated with the high pressures that competitive type Free diving can expose a diver to.

Manual page 148, Fig. 135 - FREE DIVE MAIN display:

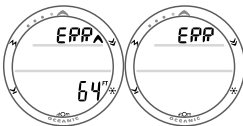
No Deco Dive Time (NDC) is added to the Main Display which appears as shown here.

It also appears on Manual Fig. 138 - 142 and the FREE Dive Main on the back of the Review Card.



Fig. 135

If for any reason, the ATOM 2.0 shuts Off then turns On again during any Dive, the message **ERR (Error)** will be displayed with the Up Arrow and current Depth. Upon surfacing and any time thereafter when Dive Computer Mode is accessed from Watch Mode, only the message ERR will be displayed. All other DC Modes/screens will be inaccessible. If this occurs, the ATOM 2.0 must be returned to the factory for evaluation/service prior to any further use for diving activities.



Error Dive

Error Surface

! WARNINGS:

- **Ensure that you know which Operating Mode is selected (NORM, GAUG, or FREE) prior to commencing any dive.**
- **Conducting Free dives within a 24 hour period after conducting SCUBA dives, combined with the effects of multiple rapid Free Dive ascents, increases your risk of decompression sickness. Such activities may result in accelerated entry into decompression which could cause serious injury or death.**
- **Combining competitive type Free dive activities that involve multiple descents/ascent with activities utilizing SCUBA during the same 24 hour period is not recommended. Presently, there is no data relating to such activities.**
- **It is highly recommended that anyone planning to become involved in competitive type Free dive activities obtain proper instruction and training from a recognized Free Diving trainer. It is imperative that the physiological affects be understood and the diver is physically prepared.**